



YOUR NO 1 TRADE SHOP
COLOREX
TRADE & HIRE

Colorex Ltd
7 Fitzherbert St, Petone, Wellington 5012
PO Box 38 453, Wellington Mail Centre 5045
Phone: 04 587 0400, Email: sales@colorex.co.nz
www.colorex.co.nz



Festool CT15 HEPA Class Dust Extractor Vacuum

Brand: Festool
Code: C4098

\$838.70 +GST \$964.51 incl. GST

Description

Festool CT 15L HEPA Class Dust Extractor Vacuum Ideal for cleaning on worksites, in workshops and in offices: with a container capacity of 15l, the CLEANTEC CT 15 vacuums up dust, dirt and water. Its design allows the full container capacity to be used almost completely – for long periods of work without having to change the filter bag.

Main applications

- Comes standard with the HEPA filter for enhanced filtration
- Perfect for mobile work with its compact dimensions, low weight and sturdy wheels
- Touch control for intuitive dust extractor operation
- The main filter can be changed easily from outside
- Cleaning accessories come included as standard and are stowed on the dust extractor
- Container/ filter bag capacity 15 l
- Flat storage area – ideal for temporary storage of work materials
- For cleaning offices, workshops, garages, motor vehicles and construction sites
- Absorbing water

Festool dust extractors are fitted with a circuit breaker for safety when a connected load of 1200 watts is exceeded. Some tools that draw higher wattage can trigger the circuit breaker and if initiated requires the dust extractor to be turned off and then on again to reset. When requiring to use larger wattage tools with dust extraction it is recommended the tool is operated off a separate outlet. When using tools it is recommended you always use the correct consumable for best results as even lower wattage tools can trip the circuit breaker if the system isn't matched to the application. (e.g.: saw

Product Specification

<https://colorex.co.nz/shop/products/machinery/vacuum-cleaners/festool-ct15-hepa-class-dust-extractor-vacuum/>



YOUR NO 1 TRADE SHOP

COLOREX
TRADE & HIRE



blade not matched to material)

Specifications

Maximum Airflow	3700.00 l/min
Maximum Vacuum	24000.00 Pa
Filter Surface Area	3369.00 cm ²
Container/Filter Bag Capacity (litres)	15/12.5 l
Power Consumption	350 – 1200 W
Mains Cable	Rubber Insulated
Mains Cable Length	5.00 m
Dimensions - L x W x H	470 x 320 x 430 mm
Weight	10.80 kg

What's Included

Qty	Description
1	Festool CT15 Vacuum
1	Hose Ø 27/32 x 3.5 m
1	SELCLEAN filter bag SC-FIS-CT MINI/MIDI-2
1	Basic Cleaning set
1	Crevice nozzle D 36 FD-150
1	Upholstery nozzle D 36 PD

Compatible items (purchased separately)



Vacuum Bags

[Festool CT MIDI Vac Bags \(Packet 5\)](#)

Product Specification

<https://colorex.co.nz/shop/products/machinery/vacuum-cleaners/festool-ct15-hepa-class-dust-extractor-vacuum/>





YOUR NO 1 TRADE SHOP
COLOREX
TRADE & HIRE

Colorex Ltd

7 Fitzherbert St, Petone, Wellington 5012

PO Box 38 453, Wellington Mail Centre 5045

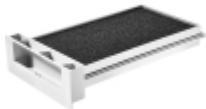
Phone: 04 587 0400, Email: sales@colorex.co.nz

www.colorex.co.nz



Main Filter

[Festool Main Filter HEPA Midi/CT15](#)



Wet Filter

[Festool Wet Filter Midi/CT15](#)

Product Specification

<https://colorex.co.nz/shop/products/machinery/vacuum-cleaners/festool-ct15-hepa-class-dust-extractor-vacuum/>



YOUR NO 1 TRADE SHOP

COLOREX
TRADE & HIRE