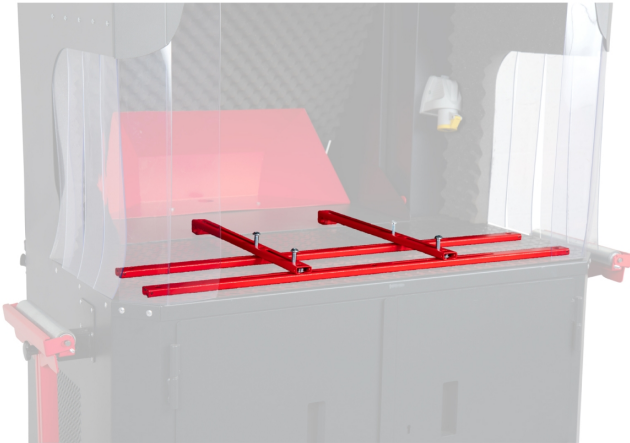




Armorgard Cuttingstation Saw Clamp

Brand: Armorgard
Code: C4513-7C

\$135.00 +GST \$155.25 incl. GST



Description

Dimensions: 1000x550x30mm

The universal clamp holds electric saws in place while being used, to improve H&S best practices.

A variety of chopsaws and mitre saws can be fitted to the CuttingStation using the clamp.

The clamp features a universal design intended to fit almost any saw, with fixing holes ranging from 110mm – 600mm, and depths ranging from 30mm to 475mm.

2 different lengths of bolts are included as standard.

Designed to be simple to retro fit to any existing SS7.

Very low profile clamp only adds 30mm to the worksurface height.

Where repetitive cutting is required, the clamp prevents the saw and frame shifting out of position, resulting in consistent, precise cuts.

Clamp only – Cutting Station not included.

Product Specification

<https://colorex.co.nz/shop/products/hardware/vehicle-storage-solutions/armorgard-cuttingstation-saw-clamp/>

